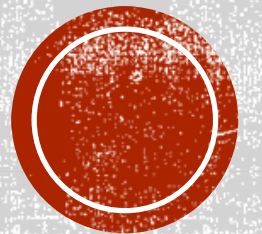


# WWII MUSEUM EXHIBITION

Isaac Pellatt – 7UL



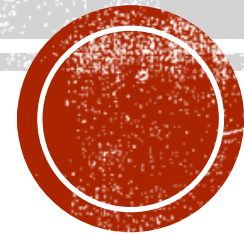
# BACKGROUND

- World War II, also known as the Second World War, was a global war that lasted from 1939 to 1945.
- The vast majority of the world's countries—including all the great powers—eventually formed two opposing military alliances: the Allies and the Axis.
- A state of total war emerged, directly involving more than 100 million people from more than 30 countries.
- World War II was the deadliest conflict in human history, marked by 70 to 85 million fatalities, most of whom were civilians in the Soviet Union and China.
- Tens of millions of people died during the conflict due to genocides, premeditated death from starvation, massacres, and disease.
- Aircraft played a major role in the conflict which included the use of terror bombing, strategic bombing and the only use of nuclear weapons in war.

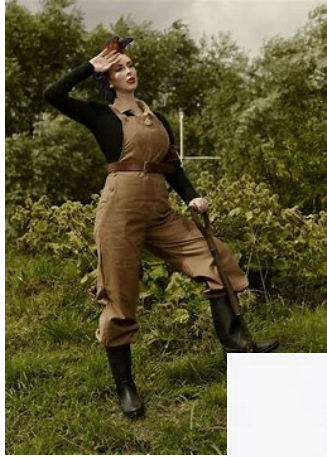


# DRESS / UNIFORM

Take a walk through this area of the exhibition and see what everyone was wearing during WWII.







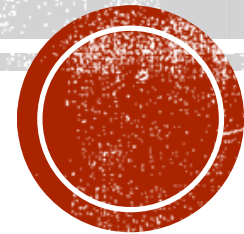
# CIVILIAN, WORKING & COMBAT WEAR

- Smart suits and tea dresses were symbolic of the WWII era.
- Working clothes were practical and hard wearing such as those shown on our Land Girl model.
- The German uniform was produced (but not designed) by Hugo Boss.
- The British uniform was designed by the War Office throughout the 1930s, with the design finalised in 1937, hence its name, P37.
- The steel helmet was adopted shortly before the United States entry into WWII, the first production M1 helmet shell was made of manganese steel coated in cork aggregate and dark olive drab paint. This combination gave the helmet a dark, coarse, appearance and texture.



# THE AIR RAID BUNKER

Take a walk through our recreation of an underground air raid bunker. Feel the atmosphere!





# A TYPICAL AIR RAID BUNKER

The Air Raid Bunker is an impenetrable concrete building or trailer that is used to call in bombing runs.

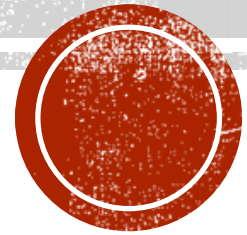
London Transport built deep-level air-raid shelters under Belsize Park, Camden Town, Chancery Lane, Claphams Common, North and South, Goodge Street and Stockwell stations

Air raid shelters, also known as bomb shelters, are structures for the protection of non-combatants as well as combatants against enemy attacks from the air. They are similar to bunkers in many regards, although they are not designed to defend against ground attack (but many have been used as defensive structures in such situations)



# THE WEAPONS ROOM

Take a walk through the weapons room, see the might of the Allies and Axis!





# PLANES, GUNS, BOMBS & TANKS...

Compared to World War 1 (1914-1918), World War 2 set the standard for aircraft combat by producing evermore powerful bombers, faster fighters and rocket- and jet-propelled airframes.

World War II saw rapid technological innovation in response to the needs of the various combatants. Many different weapons systems evolved as a result.

A blockbuster bomb was one of the largest conventional bombs used in World War II by the Royal Air Force (RAF). The term blockbuster was originally a name coined by the press and referred to a bomb which had enough explosive power to destroy an entire street or large building through the effects of blast in conjunction with incendiary bombs.

Tanks were an important weapons system in World War II. During World War II most armies employed tanks, and production levels reached thousands each month.





**OVER TO YOU . . . .**

Try your hand at planning a WWII military operation using our battle board. Get involved!

